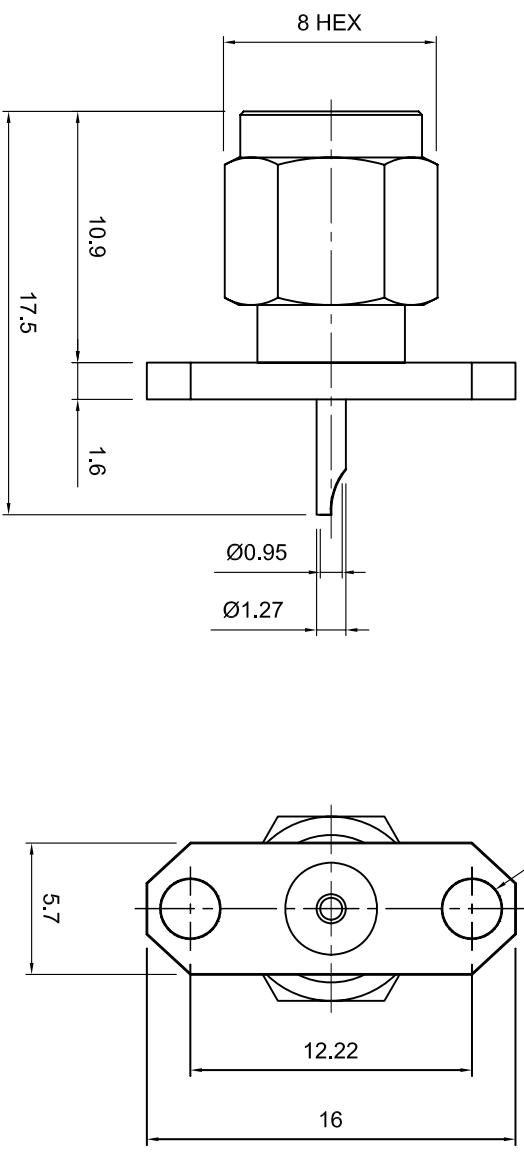


<b>Tolerances</b> 1-20=+/-0.2 20-30=+/-0.3 30-40=+/-0.4 40-50=+/-0.5 50-100=+/-0.75 100-300=+/-1.5 Angles=+/-1	<b>Dimensions are in Millimeters</b>	
	<b>Revisions</b> Description/Approved/Date     	Approved M.H. M.H. K.R.E.     
<b>NOTES</b> (plating thickness in microinches): 1. Per QQ-B-626 2. Per QQ-S-764 3. Per QQ-C-530 4. Per QQ-B-750 5. Per MIL-P-19488 6. Per ZZ-R-765 7. Per WW-1-799 8. Gold pl. 5 min. over nickel pl. 50 min. over copper strike 9. Nickel pl. 100 min. over copper strike 10. Per QQ-P-35 11. Gold pl. 30 min. over nickel pl. 50 min. over copper strike		



<b>ITEM</b>	<b>MATERIAL</b>	<b>FINISH</b>
Connector Body	Brass, Note 1	Gold, Note 8
Center Contact: Male	Brass, Note 1	Gold, Note 11
Insulation	Teflon, Note 5	None
Ferrule	--	--
Gasket	--	--
Hex Nut	--	--
Lock Washer	--	--


**Lighthouse Technologies, Inc.**  
5640 Kearny Mesa Rd, Suite N  
San Diego, California 92111  
Part Number:  
**LTI-SASMA42NFCT**

Description	SMA panel mount plug with solder cup termination. Gold	
Scale	3:1	File Name
Drawing No.	SMA/SASMA42NF	SASMA42NF