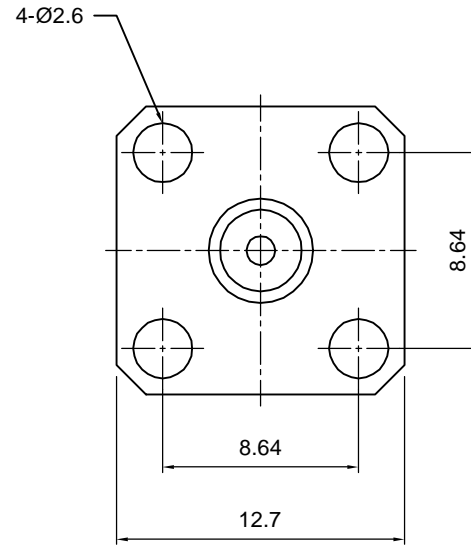
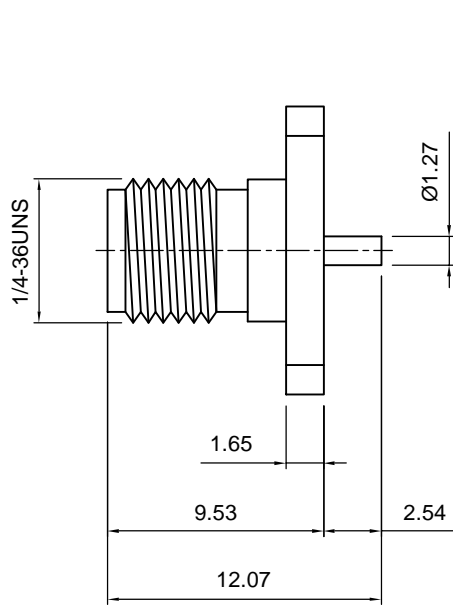


<b>Tolerances</b> 1-20=+/-0.2 20-30=+/-0.3 30-40=+/-0.4 40-50=+/-0.5 50-100=+/-0.75 100-300=+/-1.5 Angles=+/-1 <b>Dimensions are in Millimeters</b>	Revisions Description/Approved/Date	Approved M.H.	Date 08/34/04
		Checked M.H.	Date 08/34/04
		Drawn M.D.L.	Date 08/34/04
	NOTES (plating thickness in micro-inches): 1. Per QQ-B-626 2. Per QQ-S-764 3. Per QQ-C-530 4. Per QQ-B-750		



ITEM	MATERIAL	FINISH
Connector Body	Brass, Note 1	Gold, Note 8
Center Contact:	Brass, Note 1	Gold, Note 11
Insulation	Teflon, Note 5	None
Ferrule	Annealed Copper, Note 7	Same as body
Gasket		
Hex Nut		
Lock Washer		

**Lighthouse Technologies, Inc.**  
4907 Morena Boulevard, #1411  
San Diego, California 92117

Part Number:  
**LTI-SASF92SFGT**

Description		
SMA 4 hole square phlange mount PCB jack, with solder post		
termination. Gold plated brass body, Teflon dielectric.		
Scale	Drawing No.	File Name
1:1	SASF92SF	SASF92SF