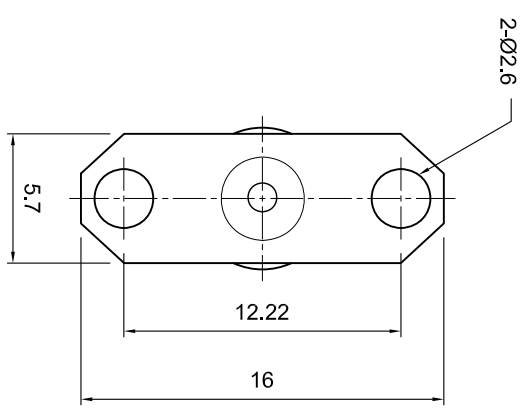
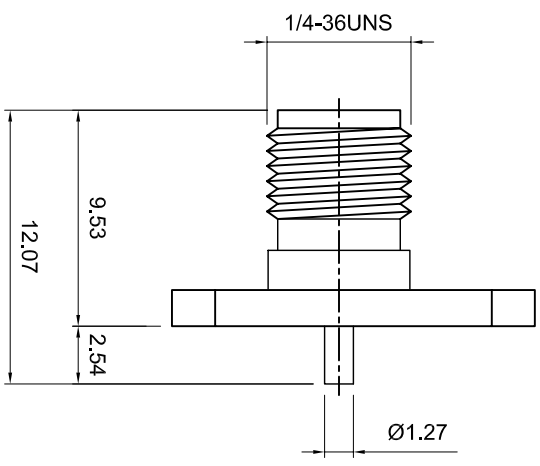


Revisions		Approved	Date
Description/Approved/Date	Checked	M.H.	Date
	Drawn	K.R.E.	Date

Tolerances	
1-20=+/-0.2	
20-30=+/-0.3	
30-40=+/-0.4	
40-50=+/-0.5	
50-100=+/-0.75	
100-300=+/-1.5	
Angles=+/-1	


Dimensions are in Millimeters

NOTES (plating thickness in microinches):	
1. Per QQ-B-626	6. Per ZZ-R-765
2. Per QQ-S-764	7. Per WW-1-799
3. Per QQ-C-530	8. Gold pl. 5 min. over nickel pl. 50 min. over copper strike
4. Per QQ-B-750	9. Nickel pl. 100 min. over copper strike
	10. Gold pl. 5 min. over nickel pl. 50 min. over copper strike
	11. Gold pl. 5 min. over nickel pl. 50 min. over copper strike



ITEM	MATERIAL	FINISH
Connector Body	Brass, Note 1	Gold, Note 8
Center Contact: F	BeCu Note 3	Gold, Note 11
Insulation	Teflon, Note 5	None
Ferrule	--	--
Gasket	--	--
Hex Nut	--	--
Lock Washer	--	--

Description		SMA 2 Hole Panel Jack with Solder post termination	
Scale		2:1	
Drawing No.	SASF92NFGT	File Name	SASF92NFGT

	
Lighthouse Technologies, Inc. 5640 Keamy Mesa Rd., Ste N San Diego, California 92111 Part Number: LTI-SASF92NFGT	