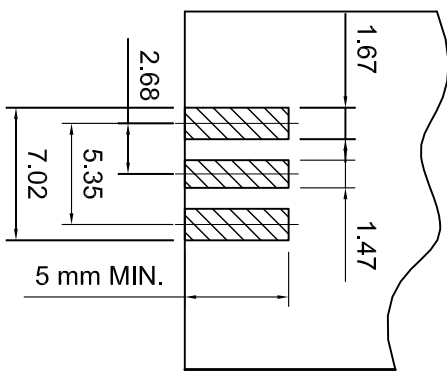
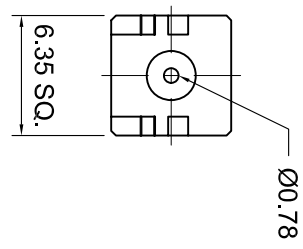
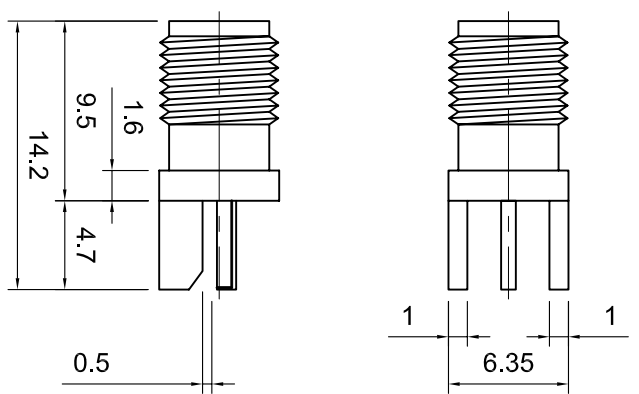


Tolerances 1-20=+/-0.2 20-30=+/-0.3 30-40=+/-0.4 40-50=+/-0.5 50-100=+/-0.75 100-300=+/-1.5 Angles=+/-1	Revisions Description/Approved/Date	
	Approved M.H.	Date 3/10/99
	Checked M.H.	Date 3/10/99
	Drawn K.R.E.	Date 3/10/99
Dimensions are in Millimeters	NOTES (plating thickness in micro-inches): 5. Per MIL-P-19468 6. Per ZZ-R-765 7. Per WW-T-799 8. Gold pl. 50 min. over nickel pl. 50 min. over copper strike 9. Nickel pl. 100 min. over copper strike 10. Per QQ-P-35 11. Gold pl. 30 min. over nickel pl. 50 min. over copper strike	
	1. Per QQ-B-626	
	2. Per QQ-S-764	
	3. Per QQ-C-530	
4. Per QQ-B-750		



LANDING PAD DIMENSIONS

ITEM	MATERIAL	FINISH
Connector Body	Brass, Note 1	Gold, Note 8
Center Contact: Female	Beryllium Copper, Note 3	Gold, Note 11
Insulation	Teflon, Note 5	None
Ferrule	--	--
Gasket	--	--
Hex Nut	--	--
Lock Washer	--	--

Description SMA end launch jack, short version, for 20 mill board	Lighthorse Technologies, Inc. 4907 Morena Boulevard, #1411 San Diego, California 92117 Part Number: LT-SASF55ZGT-2
Scale 2.5:1	Drawing No. SASASF55Z-2
	File Name SASF55Z-2