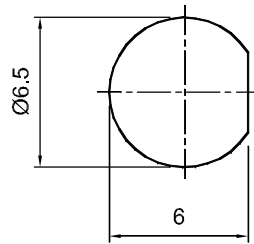
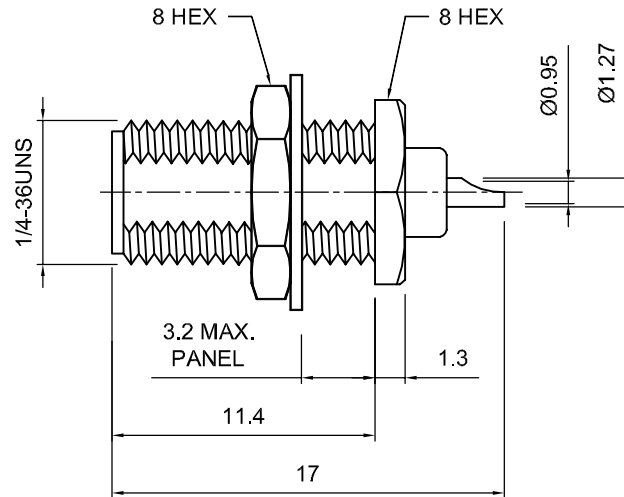


<p>Tolerances</p> <p>1-20=+/-0.2 20-30=+/-0.3 30-40=+/-0.4 40-50=+/-0.5 50-100=+/-0.75 100-300=+/-1.5 Angles=+/-1</p> <p>Dimensions are in Millimeters</p>	Revisions	Approved	Date												
	Description/Approved/Date	M.H.	06/30/99												
		Checked	Date												
		M.H.	07/01/99												
		Drawn	Date												
		K.R.E.	07/01/99												
	<p>NOTES (plating thickness in micro-inches):</p> <table border="0"> <tr> <td>1. Per QQ-B-626</td> <td>5. Per MIL-P-19468</td> <td>9. Nickel pl. 100 min. over copper strike</td> </tr> <tr> <td>2. Per QQ-S-764</td> <td>6. Per ZZ-R-765</td> <td>10. Per QQ-P-35</td> </tr> <tr> <td>3. Per QQ-C-530</td> <td>7. Per WW-T-799</td> <td>11. Gold pl. 30 min. over nickel pl. 50 min. over copper strike</td> </tr> <tr> <td>4. Per QQ-B-750</td> <td>8. Gold pl. 5 min. over nickel pl. 50 min. over copper strike</td> <td></td> </tr> </table>			1. Per QQ-B-626	5. Per MIL-P-19468	9. Nickel pl. 100 min. over copper strike	2. Per QQ-S-764	6. Per ZZ-R-765	10. Per QQ-P-35	3. Per QQ-C-530	7. Per WW-T-799	11. Gold pl. 30 min. over nickel pl. 50 min. over copper strike	4. Per QQ-B-750	8. Gold pl. 5 min. over nickel pl. 50 min. over copper strike	
1. Per QQ-B-626	5. Per MIL-P-19468	9. Nickel pl. 100 min. over copper strike													
2. Per QQ-S-764	6. Per ZZ-R-765	10. Per QQ-P-35													
3. Per QQ-C-530	7. Per WW-T-799	11. Gold pl. 30 min. over nickel pl. 50 min. over copper strike													
4. Per QQ-B-750	8. Gold pl. 5 min. over nickel pl. 50 min. over copper strike														



MOUNTING HOLE CUTOUT



ITEM	MATERIAL	FINISH	Lighthouse Technologies, Inc. 5640 Kearny Mesa Road, Suite N San Diego, CA 92111 Part Number: LTI-SASF43RGT		
Connector Body	Brass, Note 1	Gold, Note 8			
Center Contact: Female	Beryllium Copper, Note 3	Gold, Note 11	Description SMA rear mount bulkhead jack with solder cup termination. Gold plated brass body, teflon dielectric.		
Insulation	Teflon, Note 5	None			
Ferrule	Annealed Copper, Note 7	Same as body	Scale	Drawing No.	File Name
Gasket	-	-	3:1	SMA/SASF43R	SASF43r
Hex Nut	Brass, Note 1	Same as body			
Lock Washer	Brass, Note 1	Same as body			