



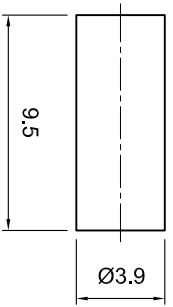
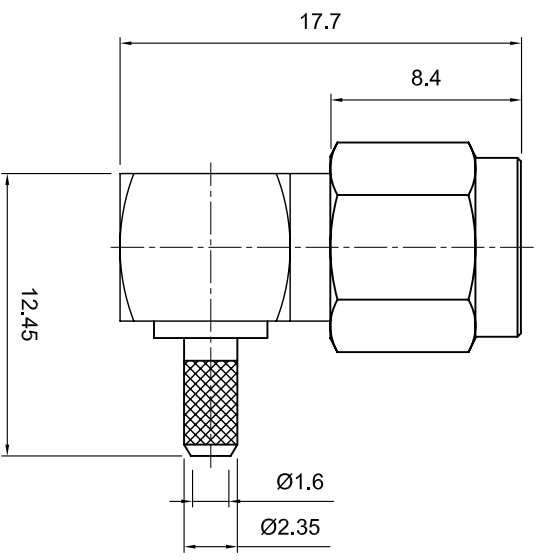
**Tolerances**  
 1-20=+/-0.2  
 20-30=+/-0.3  
 30-40=+/-0.4  
 40-50=+/-0.5  
 50-100=+/-0.75  
 100-300=+/-1.5  
 Angles=+/-1

**Dimensions are in Millimeters**

Revisions		Approved	Date
Description/Approval/Date	Checked	M.H.	06/12/00
	Drawn	K.R.E.	06/12/00

NOTES (plating thickness in microinches):

1. Per QQ-B-626	6. Per ZZ-R-765	9. Nickel pl. 100 min. over copper strike
2. Per QQ-S-764	7. Per WW-1-799	10. Per QQ-P-35
3. Per QQ-C-530	8. Gold pl. 5 min. over nickel pl. 50 min. over copper strike	11. Gold pl. 30 min. over nickel pl. 50 min. over copper strike
4. Per QQ-B-750		



ITEM	MATERIAL	FINISH
Connector Body	Brass, Note 1	Gold, Note 8
Center Contact: Male	Brass, Note 1	Gold, Note 11
Insulation	Teflon, Note 5	None
Ferrule	Annealed Copper, Note 7	Same as body
Gasket	--	--
Hex Nut	--	--
Lock Washer	--	--



**Lighthouse Technologies, Inc.**  
 5640 Keamy Mesa Road, Suite N  
 San Diego, California 92111  
 Part Number: **LTI-SALM11GT-316**

Description: SMA right angle crimp plug for RG-316. Gold plated brass  
 Scale: 2:1  
 body, teflon dielectric.  
 Drawing No. File Name  
 SALM11-316